

# AUTISM ACCEPTANCE MONTH

Together We Can Build Accepting  
& Inclusive School Communities



# What is AUTISM?

- Autism is the brain processing information in a different way
- Some people with autism may need different levels of support with social communication and interaction
- Autism is lifelong and it is a spectrum, which means individuals on the Autism Spectrum are all unique in their own ways
- Once you have met one autistic person, you have only met ONE person on the Autism Spectrum



# Can you make it to the end?

Watch this video to understand what someone who is autistic may be experiencing each day.

Watch now



# Understanding autism

Individuals on the Autism Spectrum may have different behaviours like:



Keeping everything the same all the time



Being upset if routine is changed



Flapping hands or tapping things



Repeat phrases over again



Can be overwhelmed or underwhelmed by sensory input

Just because someone is different doesn't mean they are less than. It is important to respect and embrace each other's differences.

Do you  
know  
these  
people?



## Dr. Temple Grandin

Diagnosed with autism, overcame bullying and became a prominent author and speaker on both autism and animal behavior.

## Anthony Hopkins

Diagnosed with Asperger's Syndrome, is an Oscar-winning actor known for roles in many films, including *'The Lion in Winter,'* and *'Silence of the Lambs'*

## Greta Thurnberg

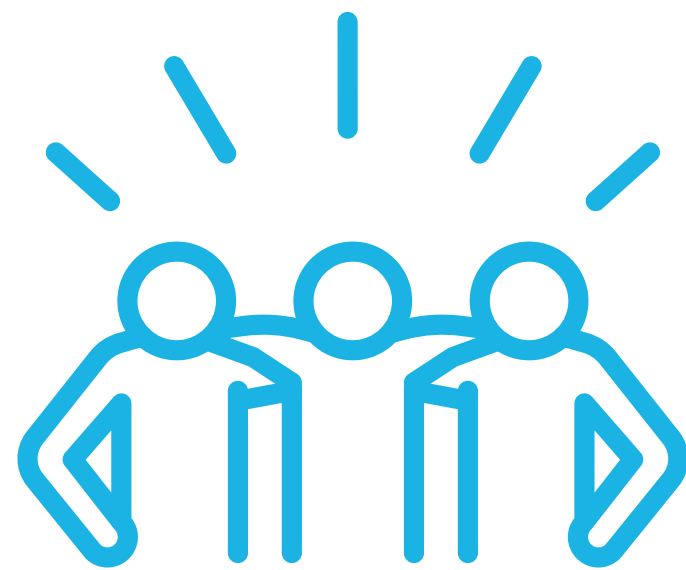
Diagnosed with Asperger's Syndrome, is an environmental activist who started #FridaysforChange, a global campaign to protest climate change.

# How can I be kind to someone with autism?

No matter our differences we all deserve kindness and respect.

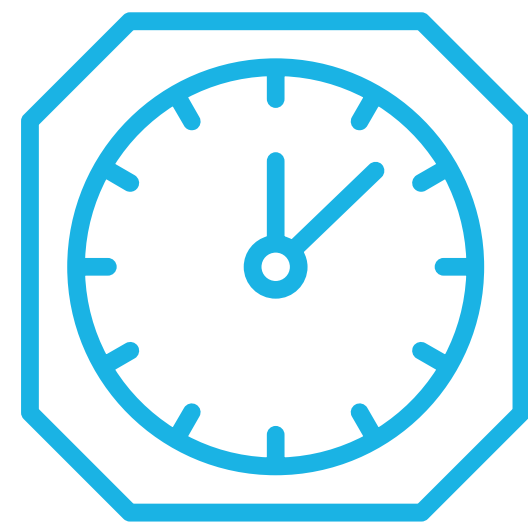
## Don't Ignore or Avoid Them

Include ALL your classmates in your activities



## Be Patient

Give them extra time to talk or learn something new



## Listen

Listen to them when they talk to you or have questions for you



## Ask Questions

Ask questions to teachers or parents if you don't understand



# CELEBRATE EACH OTHER'S DIFFERENCES



Help make your school community more accepting and inclusive!